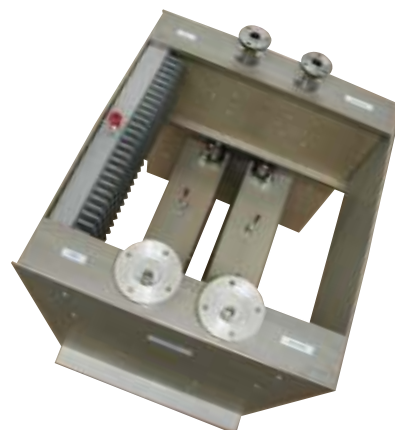


# TCTV22 Series HIGH POWER TV COMBINER CONSTANT IMPEDANCE



- DVB, ATSC AND ISDB CRITICAL AND NON CRITICAL MASK
- LOW INSERTION LOSS
- HIGH PORT TO PORT ISOLATION
- CROSS COUPLED FILTERS
- HIGH TEMPERATURE RANGE



SPECIFICATION	VALUE
Type	Constant Impedance Combiner
Frequency Band	470 – 862 MHz
Number of Antenna Outputs	1
Channel Bandwidth	6 – 8 MHz
ISDB Mask	Critical and Non Critical Mask
DVB Mask	Critical and Non Critical Mask
ATSC Mask	Critical and Non Critical Mask
Minimum Channel to Channel Separation	Non Critical Mask
	Critical Mask
	1 Guard Channel Allow Adjacent Channel
Insertion Loss NB to Antenna	0.5 dB typ @ Fo
Insertion Loss WB to Antenna	0.2 dB max
Rejection NB to WB	>30 dB
Rejection NB to NB	>50 dB
Return Loss All Ports	20 dB
Power Input per Channel	From 300 W to 2 KW max
Power Output Antenna	1 KW to 5 KW max
Connectors NB Port	EIA 7/8, EIA 1 5/8, EIA 3 1/8
Connector WB and Antenna Ports	EIA 7/8, EIA 1 5/8, EIA 3 1/8
Temperature Range	-20 a +60 °C
Mounting	19" Rack

	DVB NON CRITICAL MASK, 8MHz Bw	DVB CRITICAL MASK, 8MHz Bw	ATSC SIMPLE MASK
Selectivity Mask Specifications	> 5db at Fo +/- 4.2MHz > 16db at Fo +/- 6MHz > 41db at Fo +/- 12MHz	> 15db at Fo +/- 4.2MHz > 26db at Fo +/- 6MHz > 51db at Fo +/- 12MHz	> 10db at Fo +/- 3.5MHz > 24db at Fo +/- 6MHz > 36db at Fo +/- 9MHz

Factory reserves the right to change specifications without prior notice.

DOC BR108.01 • 20122013

7331 NW 54th Street • Miami FL 33166 • USA  
Ph (305) 884-8991 • Fax (305) 884-4041  
E mail: info@fiplex.com

Web Site: www.fiplex.com

S.Cabral 1242 • Córdoba (5006) • Argentina  
Ph (54-351) 456-8263 • Fax (54-351) 456-2507  
E mail: info@fiplex.com